

# **Mil-Spec Connectors & Accessories**



## **DEUTSCH ECD**

### **Defense / Aerospace Operations . . .**

*is the world's premier manufacturer of electrical interconnection devices for use in defense, aerospace, and commercial applications. Whether you need an interconnection device for a commercial or military aircraft, missile, tank, truck transmission or a host of other applications, Deutsch has the solution you're looking for.*

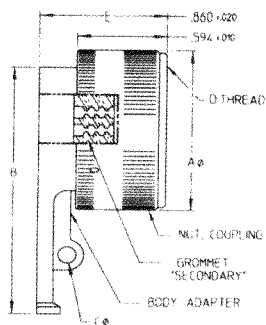
**Deutsch ECD Defense Aerospace Operations**

5733 W. Whittier Ave., Hemet CA (USA) 92545  
Phone 909/765-2200 • FAX 909/922-1544

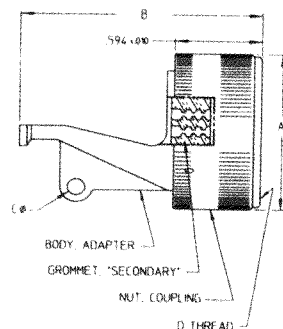
# Lightweight Strain Relief, Tie-Type

The ACT provides additional environmental protection by offering a systems approach to rear accessories. The ACT Strain Relief, Tie-Type is made from durable, lightweight, corrosion proof composite materials, and is supplied with a secondary grommet. The secondary grommet provides true strain relief and vibration dampening while providing dynamic moisture intrusion seals.

90 Degree



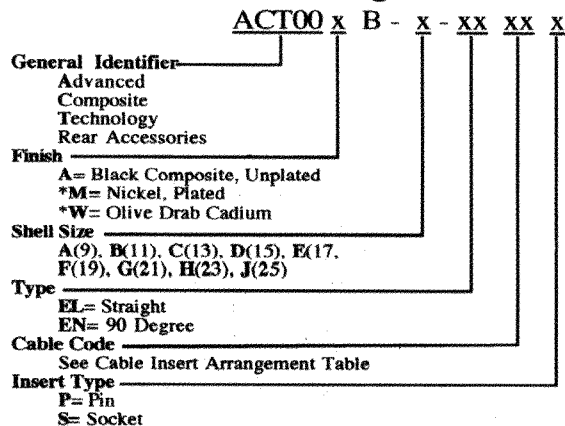
Straight



SHELL SIZE	±.015 Aφ	±.080 B	±.010 Cφ	D METRIC THREAD	±.015 E
A	.650	1.948	.140	M12X1.0-6H0.100R	.832
B	.775	2.010	.140	M15X1.0-6H0.100R	.832
C	.905	2.075	.140	M18X1.0-6H0.100R	.832
D	1.030	2.135	.140	M22X1.0-6H0.100R	.832
E	1.160	2.198	.140	M25X1.0-6H0.100R	.832
F	1.270	2.258	.140	M28X1.0-6H0.100R	.832
G	1.400	2.320	.140	M31X1.0-6H0.100R	.832
H	1.525	2.383	.140	M34X1.0-6H0.100R	.832
J	1.655	2.445	.140	M37X1.0-6H0.100R	.832

SHELL SIZE	±.015 Aφ	±.080 B	±.010 Cφ	D METRIC THREAD
A	.650	1.642	.120	M12X1.0-6H0.100R
B	.775	1.642	.120	M18X1.0-6H0.100R
C	.905	1.642	.120	M15X1.0-6H0.100R
D	1.030	1.642	.120	M22X1.0-6H0.100R
E	1.160	1.642	.140	M25X1.0-6H0.100R
F	1.270	1.642	.140	M28X1.0-6H0.100R
G	1.400	1.642	.140	M31X1.0-6H0.100R
H	1.525	1.642	.140	M34X1.0-6H0.100R
J	1.655	1.642	.140	M37X1.0-6H0.100R

## Strain Relief Ordering Information



\*Consult factory for availability.

## Cable Insert Arrangements

CABLE CODE	INSERT ARR.	CABLE CODE	INSERT ARR.	CABLE CODE	INSERT ARR.
38	A-35	53	E-35	68	J-24
39	A-98	54	F-11	69	J-29
40	B-05	55	F-32	70	J-35
41	B-35	56	F-35	71	J-61
42	B-99	57	G-11	92	B-98
43	C-04	58	G-16	93	D-19
44	C-35	59	G-35	94	C-08
45	C-98	60	G-41	95	E-99
46	D-05	61	H-21	96	G-39
47	D-15	62	H-35	97	J-43
48	D-35	63	H-53	98	D-23
49	D-97	64	H-55	99	E-19
50	F-06	65	J-04	100	D-26
51	F-08	66	J-19		
52	E-26	67	J-20		

This information is for reference only. Consult factory for envelope drawings, updated specifications, and additions to the product line.

